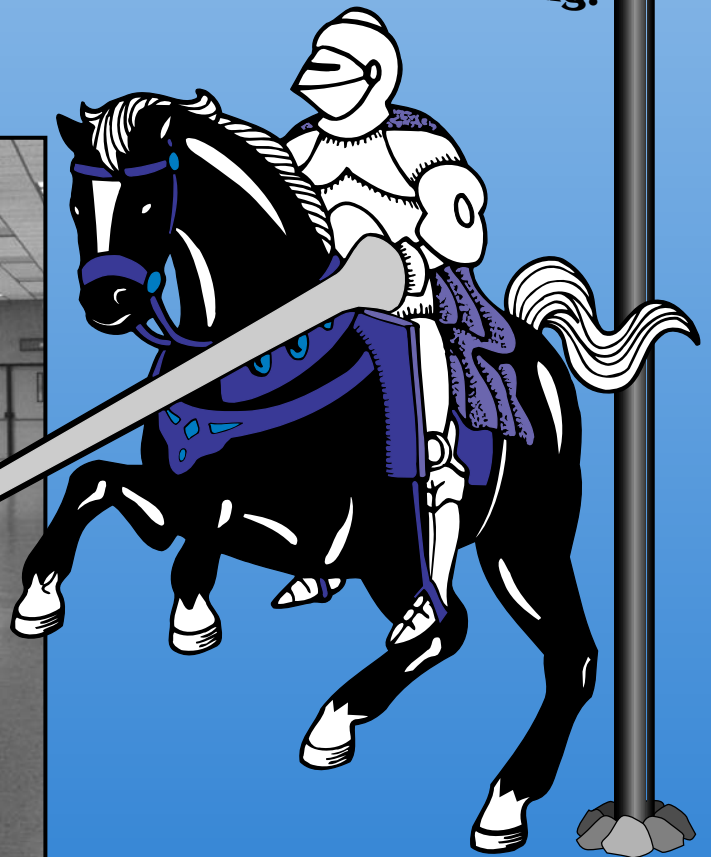
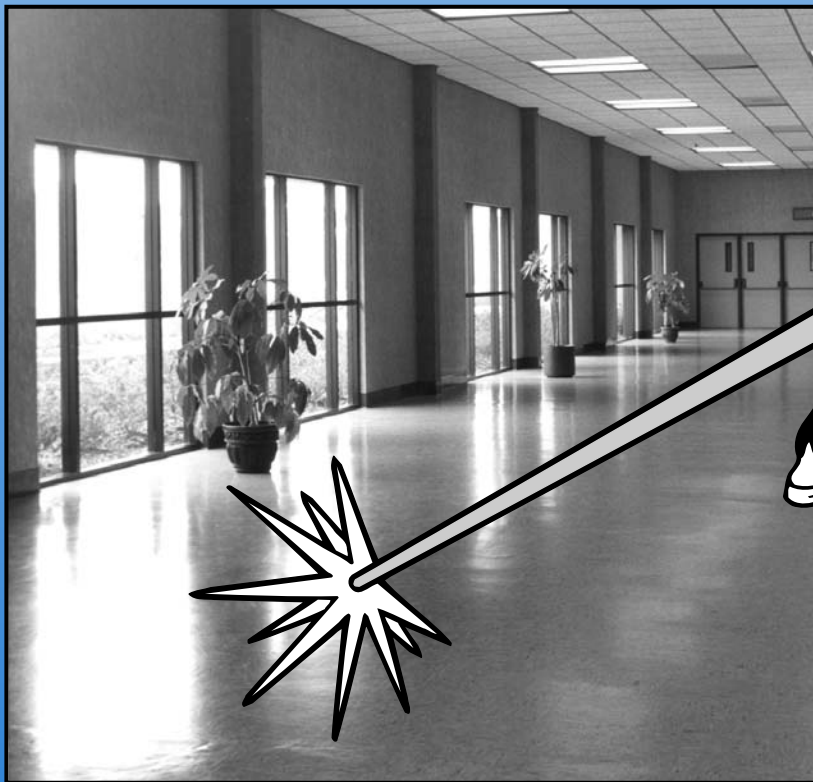


UNITED 291

SHINING ARMOR

Self-leveling, self-polishing Floor Finish

Stop wasting time with brittle floor finishes
that need constant buffing and recoating!



**Toughest finish you'll find...
ANYWHERE!**

UNITED
LABORATORIES

Here's the key to beautiful floors with minimum maintenance! Self-leveling SHINING ARMOR is so hard and so tough, it will stand up to punishment and look good longer than anything you've ever used. SHINING ARMOR is slip resistant and repels heel marks, scuffs, scratches and stains. Applies easily and dries in 20 to 30 minutes.