



DILUTION SYSTEM

UNITED
LABORATORIES
1-800-323-2594
www.unitedlabsinc.com

index

	page
1.00 introduction	
package contents	2
safety precautions	2
2.00 installation	
installation/operation	3-4
3.00 parts list	
parts list / diagrams	5
4.00 troubleshooting	6

introduction

package contents:

1. Proportioner unit - ASSE 1055 and cUPC approved
2. Wall bracket
3. Bottle shelf
4. Discharge tube for each eductor
5. Hose hook -- 3.5 GPM eductor only
6. Water inlet hose 6'
7. Mounting hardware
8. Mounting template
9. Instruction manual

safety precautions



WARNING please read precautions thoroughly before operation. Must meet all applicable local codes and regulations.

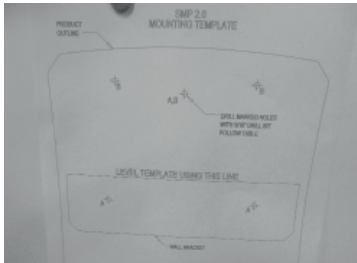
THANK YOU FOR YOUR INTEREST IN OUR PRODUCTS

Please use this equipment carefully and observe all warnings and cautions.

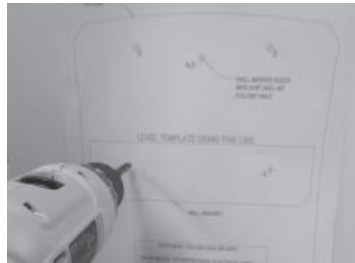
*****NOTE*****

WEAR	protective clothing and eyewear when dispensing chemicals or other materials or when working in the vicinity of all chemicals, filling or emptying equipment, or changing metering tips.
ALWAYS	observe safety and handling instructions of the chemical manufacturer. direct discharge away from you or other persons or into approved containers. dispense cleaners and chemicals in accordance with manufacturer's instructions. Exercise CAUTION when maintaining your equipment. reassemble equipment according to instruction procedures. Be sure all components are firmly screwed or latched into position.
KEEP	equipment clean to maintain proper operation.
ATTACH	only to water tap outlets (25 PSI Minimum, 85 PSI Maximum and Maximum water temperature 120° F).
NOTE	if the unit is used to fill a sink, or the discharge hose can be placed into a sink. The unit must be mounted so that the bottom of the cabinet is above the overflow rim of the sink.

installation / operation



1. The unit can be mounted with or without the provided mounting bracket. Use the mounting template for proper spacing and location of the mounting holes, noting the holes used with the bracket and holes used with dispenser back, see chart at bottom of mounting template.



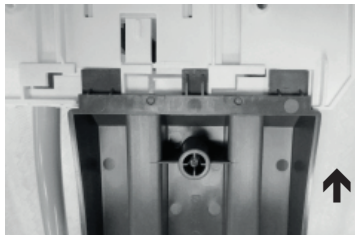
2. Drill holes for the wall anchors with 5/16" drill bit. Install anchors.



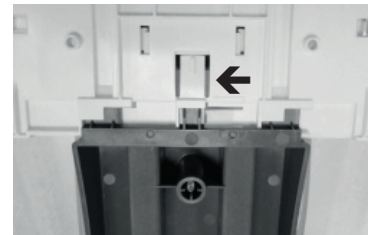
3. If using the provided wall bracket, fasten it to the wall with two screws.



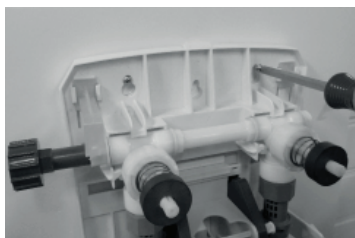
4. Remove the cabinet cover of the unit by pressing the two tabs located on the sides. Rotate up and out on the cabinet cover.



5. Insert bottle shelf up into the cabinet back by aligning the three top tabs on the shelf with the bottom notches on the cabinet back. Slide the shelf to the left until it is snapped into place. Bottle shelf should be centered vertically with unit.

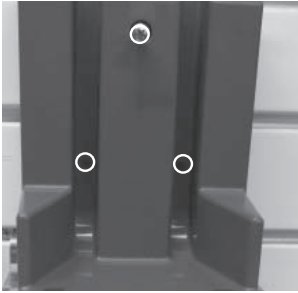


6. Place dispenser on wall bracket and install screw into the cabinet back's top center hole. **Skip to step 8**



7. If not using wall bracket, fasten unit to wall using the top two mounting holes located on the cabinet back.

installation / operation



8. Important: Install screw already fastened into bottle shelf. You have an option to install (2) more screws into holes for added mounting support.



9. Re-install cover on unit.



10. Place hose hook on end of 3.5 GPM discharge tube. Hang on shelf when not in use.



11. Connect water supply hose of at least 3/8" ID to water inlet swivel. Min. 25 PSI pressure is required for proper operation, Max. pressure 85 PSI and 120°F Max. water temperature. Connect opposite end of hose to water supply. Turn water supply on.



12. Purge air from the system by depressing the buttons briefly. There may be some water discharged from the eductor vents until the air is purged.



13. Raise handle on unit and insert product container onto shelf. Lower handle until it locks the bottle in place. Ensure bottle is aligned with chemical seal.

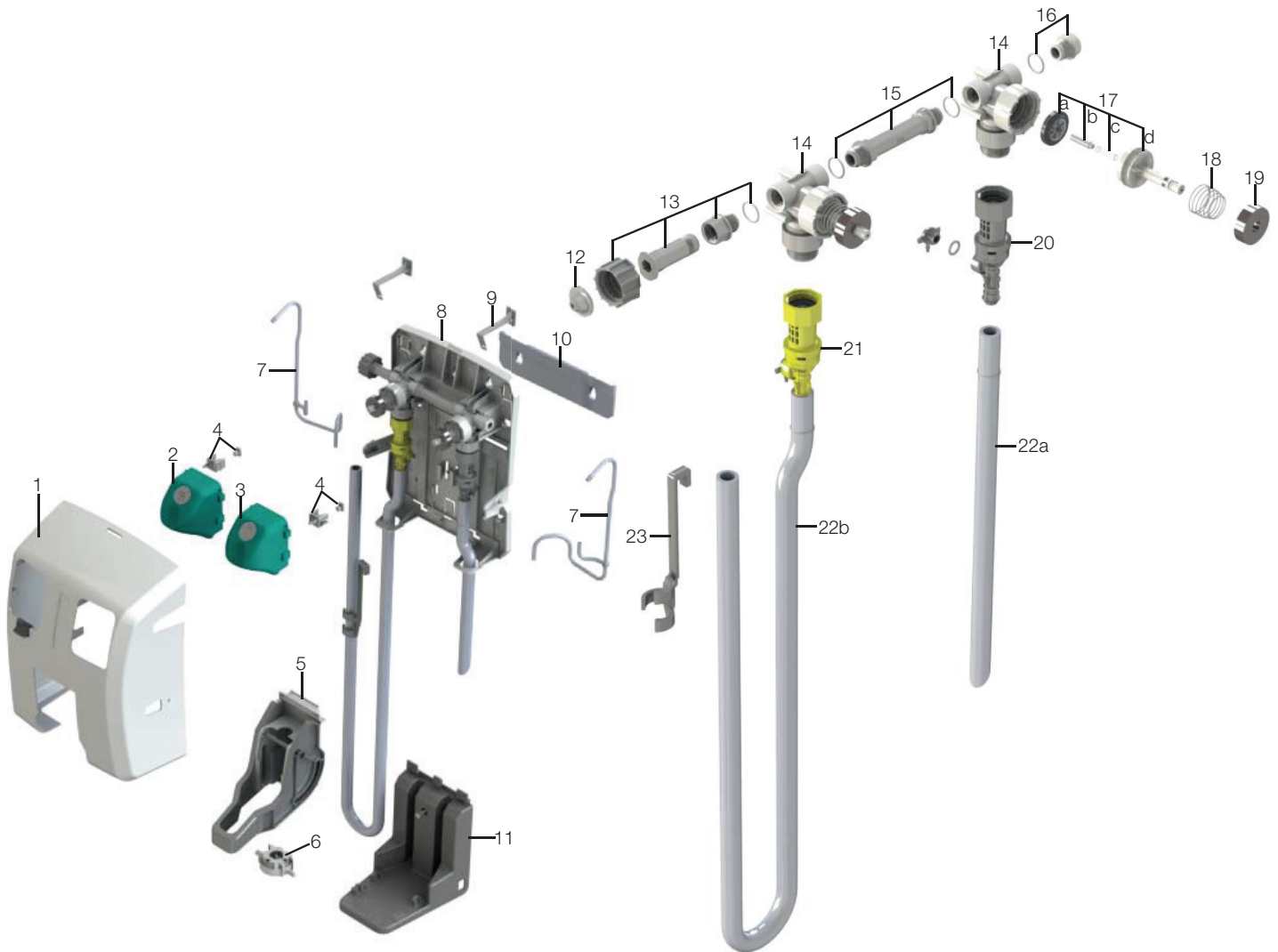


14. To operate button fill units, depress button to dispense product, release button to stop flow. **IF YOU WISH TO LOCK THE BUTTON IN THE "ON" POSITION:** Depress button and slide button lock up, **TO UNLOCK, DEPRESS BUTTON AND RELEASE.**



15. To remove product container, push the handle up until it clears the bottle.

parts list / diagrams



Key	Part No.	Description
1	90096402	Cabinet front
2	90097684	Kit, button replacement,high flow,dark blue
3	90097681	Kit, button replacement,low flow,dark blue
4	90096439	Kit, vent seals
5	90096432	Kit, bottle seal assembly
6	90096433	Kit, seal replacement
7	90096435	Kit, tubing replacement
8	90096401	Cabinet back
9	90096403	Mount bracket, vent
10	90096440	Wall bracket
11	90096420	Bottle shelf
12	238100	Strainer washer
13	90096436	Kit, Water inlet assembly
14	10098574	Kit, water valve assembly
15	90096437	Kit, nipple assembly

Key	Part No.	Description
16	10098573	Kit, pipe plug
17	10075980	Valve parts kit a. diaphragm b. armature c. spring d. valve bonnet
18	10079010	Spring
19	10079000	Magnet
20	90096431	Kit, Eductor assy 1.0 GPM
21	90096434	Kit, Eductor assy 3.5 GPM
22a	90097375	1.0 GPM discharge tube with flooding ring (12")
22b	90080288	3.5 GPM discharge tube with flooding ring (6")
23	10080730	Hose hook, dark grey
	Not Shown: 90096438	Kit, preventative maintenance Includes: 4, 6, & 7
	10091920	Water inlet hose, 3/8" x 6'

troubleshooting

Problem	Cause	Solution
1. No discharge	a. No water	a. Open water supply
	b. Excessive water pressure	b. Install regulator if water pressure (with water running) exceeds 85 PSI
	c. Clogged water inlet strainer	c. Disconnect inlet water line and clean strainer
	d. Magnetic valve not functioning	d. Install valve parts kit
2. No concentrate draw	a. Low water pressure	a. Minimum 25 PSI (with water running) required to operate unit properly
	b. Concentrate container empty	b. Replace with full container
	c. Worn or missing concentrate bottle seal	c. Replace seal
	d. Discharge tube and/or flooding ring not in place	d. Push tube firmly onto eductor discharge hose barb, or replace tube if it doesn't have a flooding ring.
	e. Clogged water inlet strainer	e. Disconnect inlet water line and clean strainer
	f. Poor vent seal (#4 on parts diagram)	f. Replace vent seal and/or vent clips
3. Foaming in discharge	a. Concentrate container malfunctioning	a. Replace with new concentrate container
	b. Worn or missing concentrate bottle seal	b. Replace seal
	c. Air leak in pick-up assembly	c. Replace pick-up assembly with kit
	d. Poor vent seal (#4 on parts diagram)	d. Replace vent seal and/or vent clips
4. Failure of unit to turn off	a. Excessive water pressure	a. Install regulator if water pressure (with water running) exceeds 85 PSI
	b. Magnet doesn't fully return	b. Make sure magnet moves freely Replace spring if short or weak
	c. Water valve parts dirty or defective	c. Clean or replace with valve parts kit



**DILUTION
SYSTEM**

UNITED
LABORATORIES
1-800-323-2594
www.unitedlabsinc.com